

This color chart is used for selecting colors for Perma-Cast<sup>®</sup> Antiquing Release and Select Grade<sup>™</sup> Antiquing Release products. When selecting colors indicate the Perma-Cast<sup>®</sup> Antiquing Release color (shown below as R#) or the Select Grade<sup>™</sup> Antiquing Release color (shown below as SGR#).

Perma-Cast<sup>®</sup> Antiquing Release or Select Grade<sup>™</sup> Antiquing Release is dusted over the surface of freshly colored concrete flatwork before stamping or texturing. The release powder prevents the tool from sticking to the concrete surface during installation and provides a secondary accent of colors.

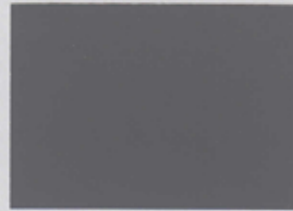
Tamping the stamping tool embeds the colored release powder in the textured surfaces of the concrete. Upon washing and sealing, the contrast in color between the underlying concrete and the release powder, creates a visually attractive, antiqued look on the concrete. The added release color also enhances the depth of texture for a more natural and realistic finish.

The amount of release agent retained on the concrete will vary with job-site conditions. The resulting colorations will range between the concrete color and that of the antiquing release powder. The surface must be sealed and maintained to preserve its antiqued appearance over time.

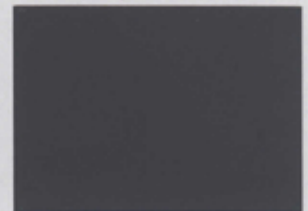
*Please indicate when ordering*  
Perma-Cast<sup>®</sup> Antiquing  
Release: R#  
**-or-**  
Select Grade<sup>™</sup> Antiquing  
Release: SGR#



R23 -or- SGR23 Smoke



R12 -or- SGR12 Storm Gray



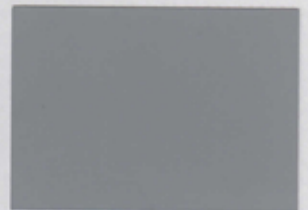
R13 -or- SGR13 Deep Charcoal



R11 -or- SGR11 Gray Plum



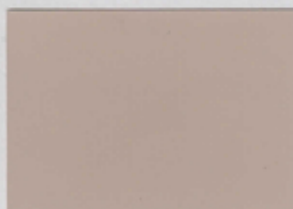
R28 -or- SGR28 Slate Gray



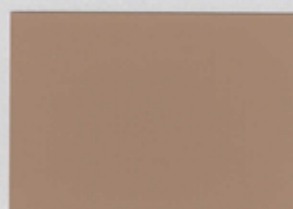
R26 -or- SGR26 Cape Cod Gray



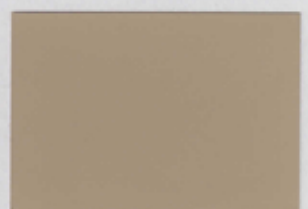
R32 -or- SGR32 Bone



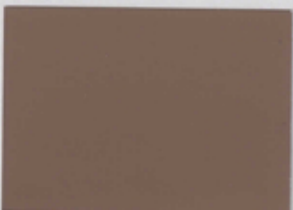
R24 -or- SGR24 French Cream



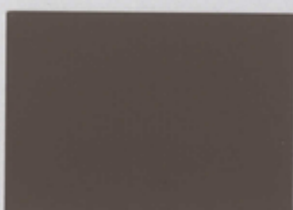
R29 -or- SGR29 Wheat



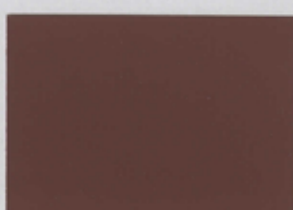
R22 -or- SGR22 Arena Buff



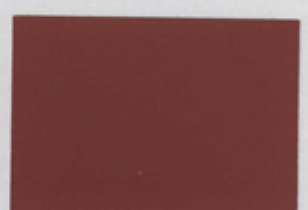
R25 -or- SGR25 Colina Tan



R14 -or- SGR14 Walnut



R19 -or- SGR19 Russet



R15 -or- SGR15 Brick Red